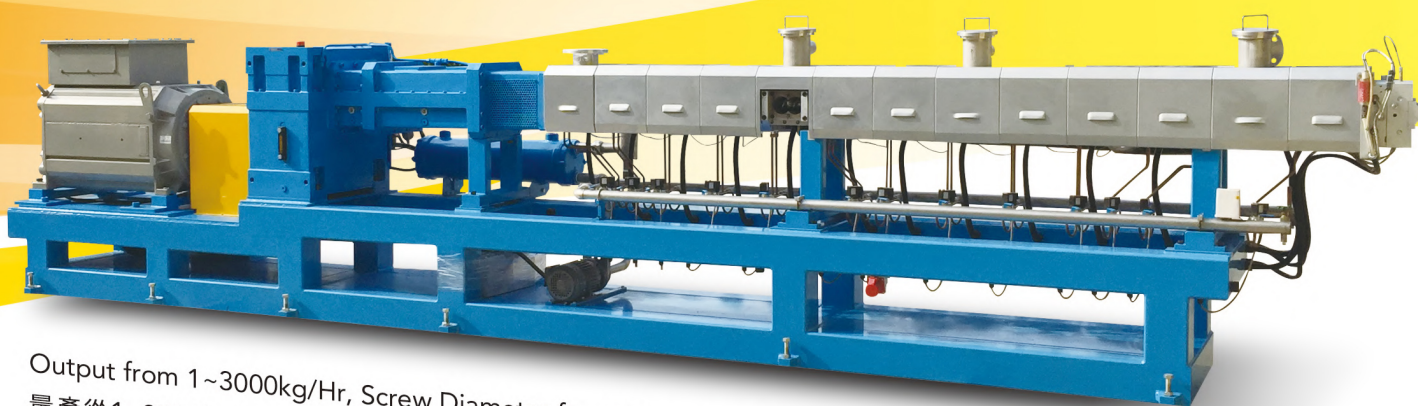


# ZENIX

Co-rotation Twin Screw Extruder  
同向雙螺桿押出機



Output from 1~3000kg/Hr, Screw Diameter from 18mm~133mm  
量產從1~3000kg/Hr，螺桿直徑從18mm~133mm



ZENIX INDUSTRIAL CO., LTD.  
澤機工業有限公司





# ABOUT ZENIX 關於澤機

In Taiwan ,  
ZENIX has the first manufactured and is recognized leader  
in the supply of CO-ROTATING TWIN SCREW EXTRUDER

澤機工業有限公司  
是台灣第一家專業設計、生產製造同向雙螺桿押出機  
及其周邊設備的廠商



**Zenix Industrial Co., Ltd. was established in 1979.** Zenix is the first Twin Screw Extruder and its peripheral equipment Manufacturer in Taiwan, and keep upgrading and developing new production with a wealth of many years' experience. Zenix's Twin Screw Extruding lines application range is not limited to plastic, rubber industry, is also widely used in food and pharmaceutical industries. Zenix extruding lines are now all over the world. Zenix is committed to providing customers with high quality equipment and good services for our customers.

## 澤機工業有限公司成立於 1979 年

澤機工業有限公司成立於 1979 年。是台灣第一家專業設計、生產製造同向雙螺桿押出機及其周邊設備的廠商。澤機公司以多年來累積的豐富經驗，不斷提升及開發新的產品。澤機公司的雙螺桿押出機的應用範圍不僅限於塑、橡膠產業，亦廣泛用於食品及藥品等行業。澤機長期致力於為我們的客戶提供高品質的設備及最良好的服務，我們的產品目前遍佈世界各地，得到越來越多的客戶信賴。



## The Biggest Co-rotation Twin Screw Extruder Supplier in Taiwan

### Main Products

- ◆ Co-Rotating Twin Screw Extruder for Plastics, and Food etc.
- ◆ Peripheral Machine: Single/Twin Screw Feeder, Side Feeder, Screen Changer etc.
- ◆ Pelletizing System  
Strand, Water Ring, Under Water and Air Cooling Pelletizing System etc.
- ◆ Extruding Model and Die

## 台灣最大的同向雙螺桿押出機供應商

### 主要產品

- ◆ 同向雙螺桿押出機 ( 應用於塑膠、食品 ... 等。)
- ◆ 押出機周邊設備：單 / 雙螺桿餵料機、側餵料機、免停機換網機 ... 等。
- ◆ 製粒系統 - 拉條 / 水環 / 水中製粒 / 風冷製粒系統
- ◆ 押出模具

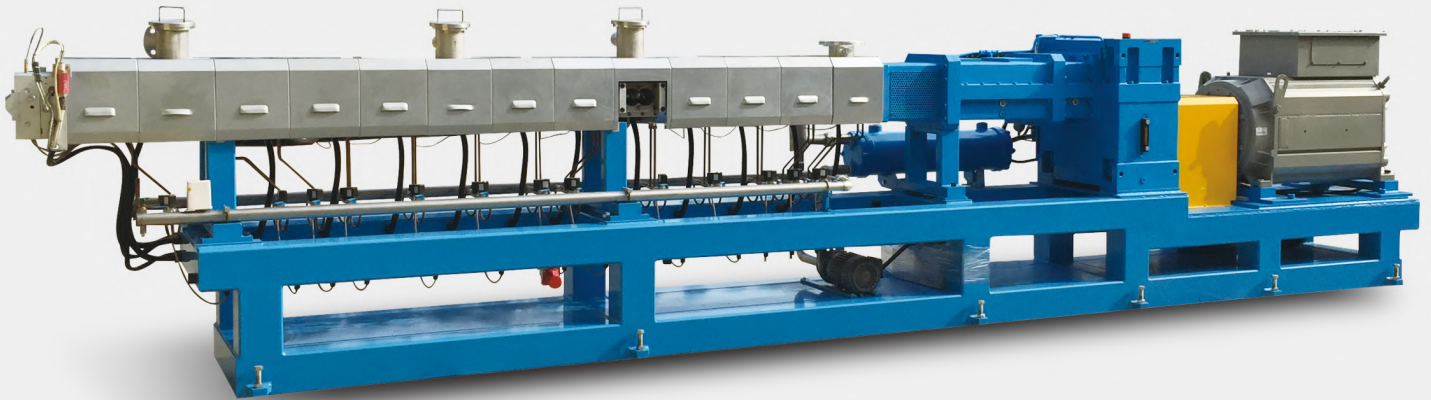


### Flexible Application

- ◆ PLASTICS: TPU, TPE, TPV, TPR, PP, PE, PC, ABS, PET, PBT, LCP, PMMA, PLA, PBAT, PPO/PPE, PA6, PA66, PA12, PA6T, PA9T, PS, PEEK, EVOH, EVA, PVA, PVB, SBS, SEBS, EPOXY, etc.  
FILLER:  $\text{CaCO}_3$ ,  $\text{TiO}_2$ ,  $\text{Al}_2\text{O}_3$ ,  $\text{ZrO}_2$ , Talc, GF, CF, Mica,  $\text{SnO}_2$ ,  $\text{Fr}_2\text{O}_3$ , Wood-powder, Pigment, Carbon-black, Ceramic-powder, Magnetic-powder, Fe-powder, Heat-conductive-material, Electrical-conductive-material, etc.
- ◆ FOOD: TVP( Chunk, Slice, Mince, Bean Curd Sheets), Reconstitute Multiple Grain, etc.

### 廣泛應用於

- ◆ 塑膠：TPU, TPE, TPV, TPR, PP, PE, PC, ABS, PET, PBT, LCP, PMMA, PLA, PBAT, PPO/PPE, PA6, PA66, PA12, PA6T, PA9T, PS, PEEK, EVOH, EVA, PVA, PVB, SBS, SEBS, EPOXY, 等。  
填充材料： $\text{CaCO}_3$ ,  $\text{TiO}_2$ ,  $\text{Al}_2\text{O}_3$ ,  $\text{ZrO}_2$ , Talc, GF, CF, 雲母,  $\text{SnO}_2$ ,  $\text{Fr}_2\text{O}_3$ , 木粉, 顏料, 碳黑, 陶瓷粉, 磁粉, 鐵粉, 導熱材料, 導電材料, 等。
- ◆ 食品：TVP( 素肉塊, 片, 末, 豆皮), 重組米, 等。



## Twin Screw Extruder 雙 螺 桿 押 出 機

- ◆ High Torque
  - ◆ Co-rotating & Conjugate/Self-cleaning
  - ◆ High Wear & Corrosion Resistant Screw Elements
  - ◆ Seamless Bi-metal Barrels
  - ◆ Spline Shafts
  - ◆ AC High Efficiency Motor
  - ◆ High Efficiency Cartridge Heating & Water Cooling
  - ◆ Flexible Modular Design
  - ◆ Advanced Control Systems
  - ◆ Excellent Productivity with Low energy Consumption
  - ◆ Easy Operation
  - ◆ Easy Maintenance
  - ◆ Experienced
  - ◆ Economical & Durable
- ◆ 高扭矩
  - ◆ 同向旋轉、共軛 / 自清
  - ◆ 高耐磨、耐蝕螺紋元件
  - ◆ 無縫雙合金料缸
  - ◆ 花鍵軸芯
  - ◆ 高效交流馬達
  - ◆ 高效電熱管加熱 & 水冷卻
  - ◆ 靈活的模組化設計
  - ◆ 先進的控制系統
  - ◆ 高效低能耗
  - ◆ 操作簡便
  - ◆ 容易維修
  - ◆ 經驗豐富
  - ◆ 經濟耐用





## Zenix Twin Screw Extruder Technical Specifications 澤機雙螺桿押出機技術規格

MODEL 型號	ZPT-18HT	ZPT-25HT	ZPT-32HT	ZPT-42HT	ZPT-58HT	ZPT-77HT	ZPT-92HT	ZPT-112HT	ZPT-133HT
Screw Diameter (mm) 螺桿直徑 (mm)	18	25	32	42	58	77	92	112	133
Diameter Ratio (D/d) 螺桿直徑比 (D/d)	1.55								
Motor Power (KW) 馬達功率 (KW)	~2.2	~15	~25	~50	~184	~450	~644	~920	~1610
Screw Speed (rpm) 螺桿轉速 (rpm)	~500	~800						~600	
Torque per Screw (Nm/shaft) 螺桿扭力 (Nm/shaft)	21	88	146	318	1113	2733	3928	7321	12813
Screw L/D 螺桿長徑比 L/D	~52								
Center Line Height (mm) 中心高 (mm)	1000			1100				1200	
Approx Weight 40:1 (kg) 重量 40:1 (kg)	500	700	1000	2000	3000	6000	8000	15000	20000
Heating Power 40:1 (KW) 熱功率 40:1 (KW)	5.4	9	14.4	21.6	43.2	74.8	96	129.6	170
Cooling Water 20°C (L/min) 冷卻水流率 20°C (L/min)	38	38	38	38	70	70	140	360	480

## Expected Throughputs ( kg / hr ) 量產 ( kg / hr )

MODEL 型號	ZPT-18HT	ZPT-25HT	ZPT-32HT	ZPT-42HT	ZPT-58HT	ZPT-77HT	ZPT-92HT	ZPT-112HT	ZPT-133HT
Polymer Alloyer 塑膠合金	1~10	8~30	10~60	40~160	180~450	350~900	800~1450	900~2000	1200~3000
Degassing (Volatiles 5~60%) 脫氣 (揮發物 5~60%)	1~6	4~20	5~40	30~100	100~300	250~700	500~1200	600~1350	1000~2000
Fiber Compounding(10~50%) 纖維複合 (10~50%)	1~8	6~25	10~50	40~180	180~420	350~850	800~1600	800~1600	1200~2500
Mineral Filler Comp. (5~85%) 礦物填充 (5~85%)	2~15	6~45	10~90	45~200	160~480	350~980	800~1800	800~2500	1200~3500
Masterbatch (pigment 10~50%) 色母 (色劑 10~50%)	1~6	6~20	5~35	35~160	100~300	300~700	650~1400	600~1200	800~1800
Other (Grafting, Reaction, Powder Coating) 其他 (接枝, 反應, 粉末塗布)	1~5	4~15	5~30	20~120	40~350	200~550	450~1100	500~1000	600~1500



## Pelletizer System

製 粒 設 備



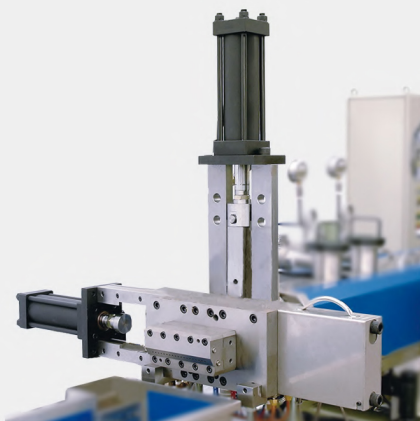
## Side Feeder

側 餵 料 機



## Diverter Valve & Screen Changer

排 料 閥 和 換 網 機





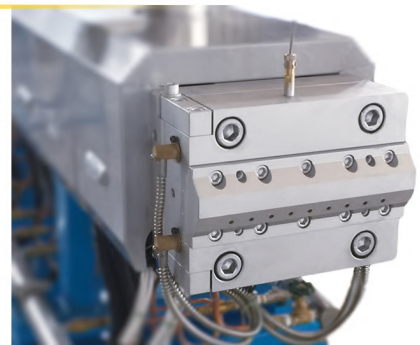
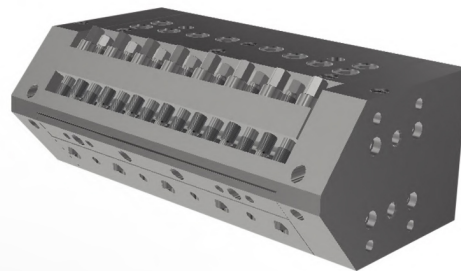
## Feeding System

餵料機 / 設備



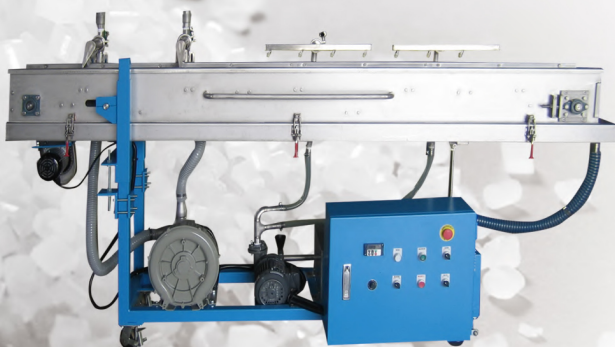
## Die

模具



## Other Peripheral Equipment

其他周邊設備





**SOLUTION** LEADER OF TPU REACTION, D-LFT AND TVP EXTRUSION  
**解決方案** TPU 反應、D-LFT 及 TVP 押出領域的領導者

## Extruding Line for Compounding 複合材料生產設備



## Extruding Line for D-LFT 長纖增強複合材料生產設備





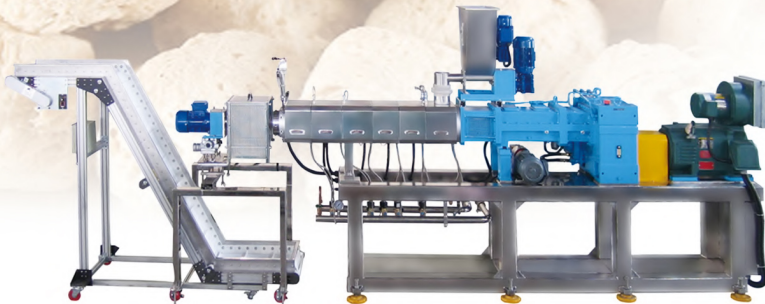
## Extruding Line for Reaction Material

反應押出生產設備



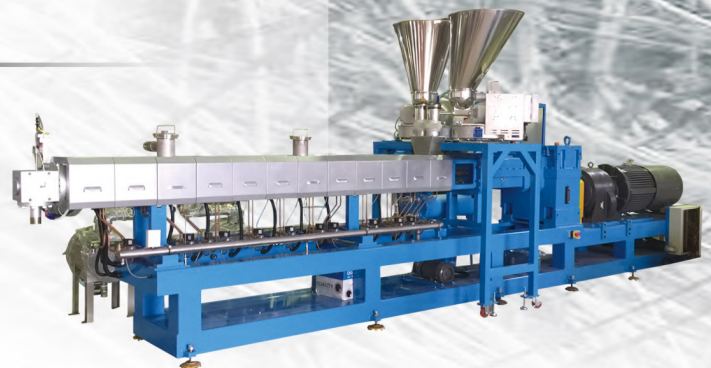
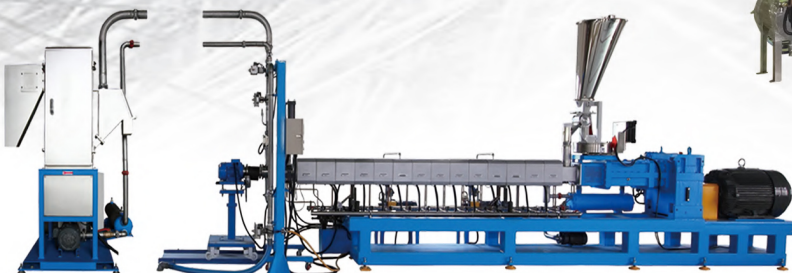
## Extruding Line for TVP

素肉拉絲蛋白生產設備



## Special Spinning

特殊紡絲

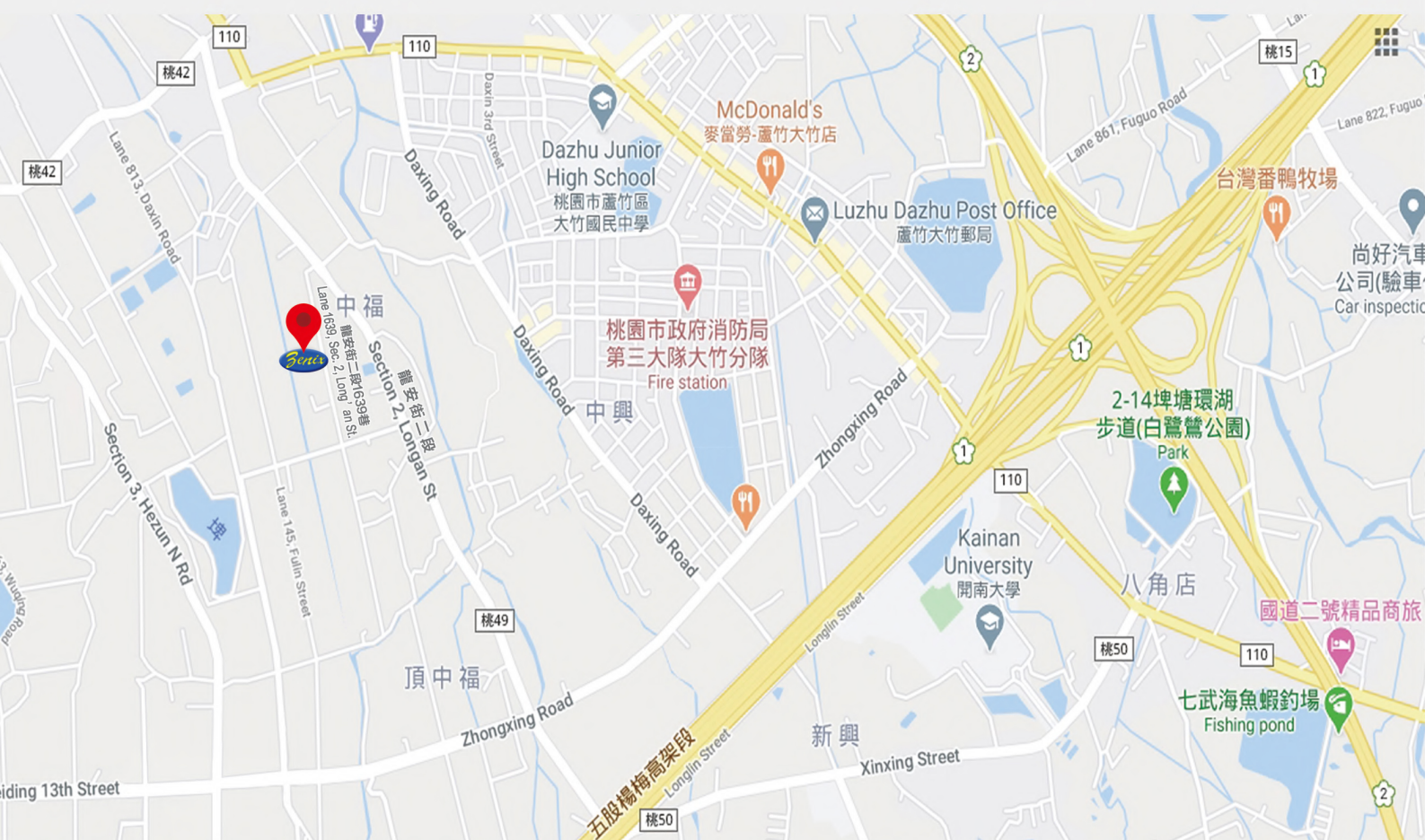






# CONTACT 聯絡資訊

## ZENIX INDUSTRIAL CO., LTD. 澤機工業有限公司







NO. 122, LN. 1639, SEC. 2, LONG'AN ST.,  
LUZHU DIST., TAOYUAN CITY 338, TAIWAN  
338 桃園市蘆竹區龍安街二段1639巷122號



+886-3-3131306



+886-3-3139972



zenixind@ms55.hinet.net  
zenix.ind@msa.hinet.net



www.zenix.com.tw





[www.zenix.com.tw](http://www.zenix.com.tw)



**ZENIX INDUSTRIAL CO., LTD.**  
**澤 機 工 業 有 限 公 司**

No. 122, Ln. 1639, Sec. 2, Long'an St., Luzhu Dist., Taoyuan City 338, Taiwan  
338 桃園市蘆竹區龍安街二段1639巷122號

☎ +886-3-3131306

📠 +886-3-3139972

✉ [zenixind@ms55.hinet.net](mailto:zenixind@ms55.hinet.net)  
[zenix.ind@msa.hinet.net](mailto:zenix.ind@msa.hinet.net)

🌐 [www.zenix.com.tw](http://www.zenix.com.tw)

